



Shockwatch:

- Provides immediate proof of mishandling
- An impact sensor that adheres directly to shipments
- Sensor turns from white to red when impact is beyond set parameter



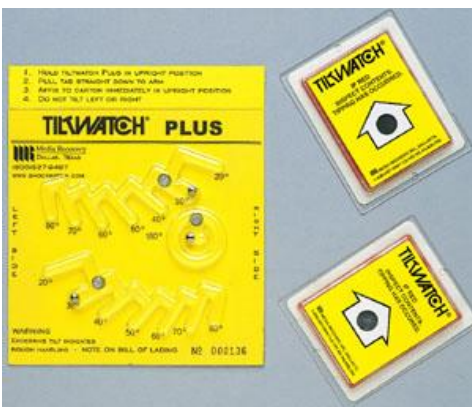
Shockwatch clips:

- Ensures correct care is taken of sensitive or calibrated equipment
- Monitors impact sensitive products
- Determines if a malfunction is due to mishandling
- Validates or invalidates warranty claims



Mag – 2000

- An impact detection device for larger items (above 150kg)
- Indicates when threshold is exceeded and in what direction
- Can be reset with a specially designed key



Tiltwatch & Tiltwatch plus

- For “THIS SIDE UP” items Tiltwatch indicates if the monitored item has been tilted >80 degrees
- Tiltwatch Plus indicates tilt in 10 degree increments and if the monitored item has been upside down



Heatwatch Tr-1

- Determines the condition and shelf life of the product based on the temperatures it has been exposed to
- An electronic temperature and spoilage monitor
- Creates a electronic simulation of a perishable item



Temperature & Humidity indicators:

- Chemical temperature/humidity sensors that are included with perishable items
- Sensor changes colour when exposed to unfavourable temperatures/humidity



DataScribe RH52

- Accurate temperature and humidity recording
- Up to 16 months of hourly readings in protected memory
- Easy downloads to PC or DataScribe Transporter



Shocklog & Micro Shocklog

- Highly sophisticated tri-axial shock and vibration monitor
- Velocity or acceleration measurements
- Detailed measurement of events outside of user set parameters